

# The **MiraQ** Platform

Intraoperative Surgical Guidance and Quality  
Assessment

For

# Improve surgical outcomes, demonstrate quality, & increase cost efficiency

Performing intraoperative quality assessment and ultrasonic surgical guidance leads to better surgical outcomes and minimizes the probability of surgical re-interventions.

Medistim's MiraQ™ System is a versatile tool for cardiac, vascular and transplant procedures. With transit time flow measurement (TTFM) and high-frequency ultrasound (HFUS) modalities combined, the MiraQ™ System documents findings and provides immediate feedback on graft patency during surgery.

Combining the spatial information from ultrasound imaging and quantitative data from TTFM enables the surgeon to make informed decisions, and revise when necessary.

TTFM and Epiaortic ultrasound imaging are included in various guidelines.

2018 ESC/EACTS Guidelines on Myocardial revascularization. European Heart Journal (2018) 00, 1-96.



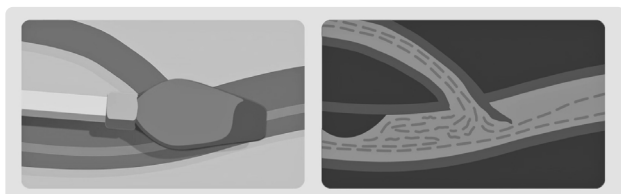
**MiraQ** - the only device combining Imaging & TTFM

# Dual technology for optimal insights

## Imaging

Medistim's High-frequency Ultrasound (HFUS) Imaging probe provides high-resolution images to assess morphology.

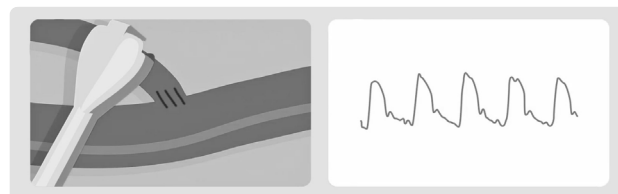
- High-resolution, near-field imaging
- Designed for small-incisions
- Reusable and sterilizable probes



## TTFM

Medistim's TTFM probes utilize transit time technology to accurately measure blood flow volume intraoperatively.

- Objective and reliable data
- Robust and user independent
- Ease of use



## System Features

### Modular design

All MiraQ™ Systems can be delivered as a "Flow only" system, and be upgraded onsite with an imaging module.

### Pressure Measurement

Connect to pressure measurement system

### Side-by-side screen comparisons

- Compare any measurement against a reference measurement
- Evaluate improvement and perform functional tests on the grafts.

### Elegant user interface & mobile design

- Seamless control with an interactive, optimized display
- Practical storage for manuals and cables
- Flexible monitor arm and rotatable screen

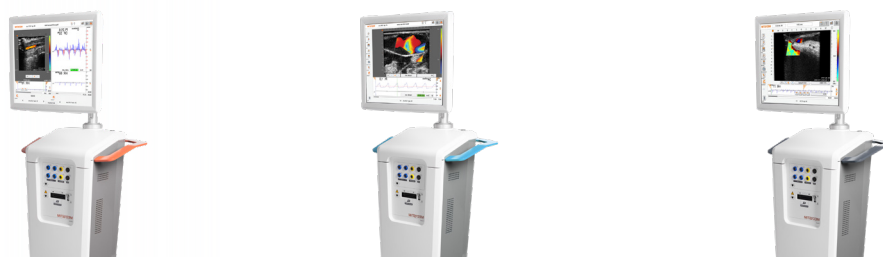
### Expandable options

- Export and import data to hospital's information system using DICOM option.
- All MiraQ™ Systems come equipped with isolated network connection, allowing for safe and secure access to the hospital network.

Learn more about clinical cases and visit our resource hub at [medistim.com](https://medistim.com)



## Standard Configuration <sup>4,5</sup>



	MiraQ Cardiac <sup>1</sup>	MiraQ Vascular <sup>2</sup>	MiraQ Ultimate <sup>3</sup>
<b>IMAGING + FLOW</b>	<b>MQC1</b> 1 Imaging   2 Flow   1 AUX	<b>MQV1</b> 1 Imaging   2 Flow   1 AUX	<b>MQU1</b> 1 Imaging   2 Flow   1 AUX 1 Pressure
<b>FLOW ONLY</b>	<b>MQC0</b> 2 Flow   1 AUX	<b>MQV0</b> 2 Flow   1 Pressure	<b>MQU0</b> 2 Flow   1 AUX   1 Pressure

<sup>1</sup> The MiraQ Cardiac is specifically designed for cardiac surgical applications.

<sup>2</sup> The MiraQ Vascular is specifically designed for vascular and transplant surgical applications.

<sup>3</sup> The MiraQ Ultimate integrates cardiac, vascular and transplant applications in one system.

<sup>4</sup> All MiraQ systems equipped with AUX channels are shipped with a 9-pin universal ECG cable.

<sup>5</sup> Systems are under warranty for a period of 25 months from shipment date.

## Customizable options - Factory Configuration

		MQC1	MQC0	MQV1	MQV0	MQU1	MQU0
<b>MQ200107</b>	2 extra flow channels	✓	✓	✓	✓	✓	✓
<b>MQ200106 <sup>6</sup></b>	1 Doppler channel		✓		✓		✓
<b>MQ200117 <sup>7</sup></b>	1 extra pressure channel	✓	✓	✓	✓	✓	✓
<b>MQ200108 <sup>8</sup></b>	1 extra AUX channel	✓	✓	✓	✓	✓	✓
<b>MQ200035 <sup>9</sup></b>	Printer support	✓	✓	✓	✓	✓	✓
<b>MQ20009 <sup>9</sup></b>	Printer support & color printer	✓	✓	✓	✓	✓	✓
<b>MQ241501</b>	DICOM interface	✓	✓	✓	✓	✓	✓

<sup>6</sup> A system configured with a Doppler channel cannot be combined with an imaging module.

<sup>7</sup> Pressure channels are intended to be connected to a transducer to measure pressure directly.

<sup>8</sup> AUX channels are designed to receive signals from other monitoring systems, such as ECG and pressure.

<sup>9</sup> The printer support option readies the MiraQ System for installation of a locally-purchased, Medistim-approved color printer.

All products mentioned in this brochure are in compliance with the European Medical Device Directive 93/42/EEC. Please refer to the User Manual for indications, contraindications, warnings, precautions, and further specifications and descriptions. Specifications may be changed without notice. For a list of flow probes for other applications, contact your Medistim representative.

FDA 510(k) cleared no. K102595  
FDA 510(k) cleared no. K040228

