

# Invengenx®

## Bovine Pericardial Tissue Patch



### Our patch's unique advantages:

- Pliable and Intact Matrix Membrane
- Resistant to Infection
- Superior Tensile Strength
- Ready to Use and Prehydrated
- Elasticity Compatible with Vasculature
- Superior Suture Retention

FÖRHANDLAS AV:

## MEDSTIM

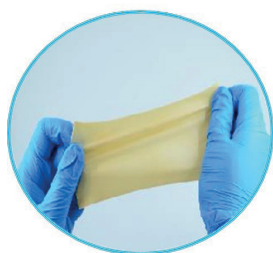
Medistim Sverige AB  
Tel: +46 (0)70 7373800  
www.medistim.se  
E-post: sverige@medistim.com

tisgenX  
Life, Next Now™

# Invengenx® Bovine Pericardial Tissue Patch

Invengenx® bovine pericardial tissue patches are cross linked with glutaraldehyde using proprietary fixation methodology which preserves its natural collagen structures. Our fixation treatment enhances the mechanical strength of the tissue while maintaining its superior flexibility, soft and supple characteristics.

The raw material is sourced from abattoirs that are located in OIE declared BSE/TSE negligible countries with full traceability.



Ultimate Tensile Strength



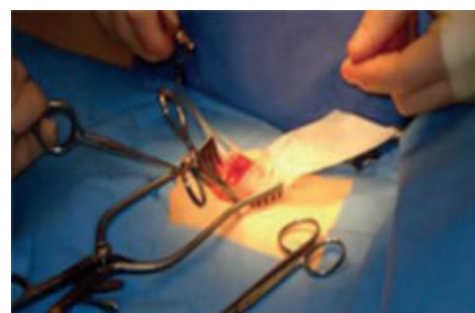
Suture Retention



Burst Strength



Elasticity & Elongation



## Cardio & Vascular Applications

- Atrial septal defect
- Ventricular septal defect
- Right ventricular outflow tract (RVOT) repair and reconstruction
- Tetralogy of Fallot
- Heart valve leaflet repairs and reconstruction
- Vascular repairs and reconstructions

## Thoracic Surgery Applications

- Closure of bronchial stumps
- Diaphragmatic closures
- Treatment of congenital chest wall defects
- Treatment of congenital traumatic defects
- Other procedures

## Soft Tissue Repair Applications

- Trachea repair
- Ulcers
- Staple or Suture line reinforcement
- Parastomal reinforcement
- Rectal prolapse
- Peyronie's repair
- Enterocutaneous fistula
- Rectovaginal fistula
- Other procedures

## Wide variety of sizes with uniformity

MODEL	DESCRIPTION	SIZES	MODEL	DESCRIPTION	SIZES
XM-04	Thin Tissue Patch	0.6x8 cm	XM-12	Thin Tissue Patch	2x9 cm
XM-05	Thin Tissue Patch	0.8x8 cm	XM-13	Thin Tissue Patch	2.5x15 cm
XM-05T*	Thin Tapered Tissue Patch	0.8x8 cm	XM-14	Square Tissue Patch	4x4 cm
XM-06	Thin Tissue Patch	1x6 cm	XM-15	Rectangular Tissue Patch	3x6 cm
XM-07	Thin Tissue Patch	1x10 cm	XM-16	Long Tissue Patch	4x16 cm
XM-07T*	Thin Tapered Tissue patch	1x10 cm	XM-17	Rectangular Tissue patch	5x6 cm
XM-08	Thin Tissue Patch	1x14 cm	XM-18	Large Tissue Patch	5x10 cm
XM-08T*	Thin Tapered Tissue Patch	1x14 cm	XM-19	Rectangular Tissue Patch	6x8 cm
XM-09	Thin Tissue Patch	1.5x8 cm	XM-20	Large Tissue Patch	6x10 cm
XM-10	Thin Tissue Patch	1.5x10 cm	XM-21	Large Tissue Patch	7x10 cm
XM-10T*	Thin Tapered Tissue Patch	1.5x10 cm	XM-22	Large Tissue Patch	8x14 cm